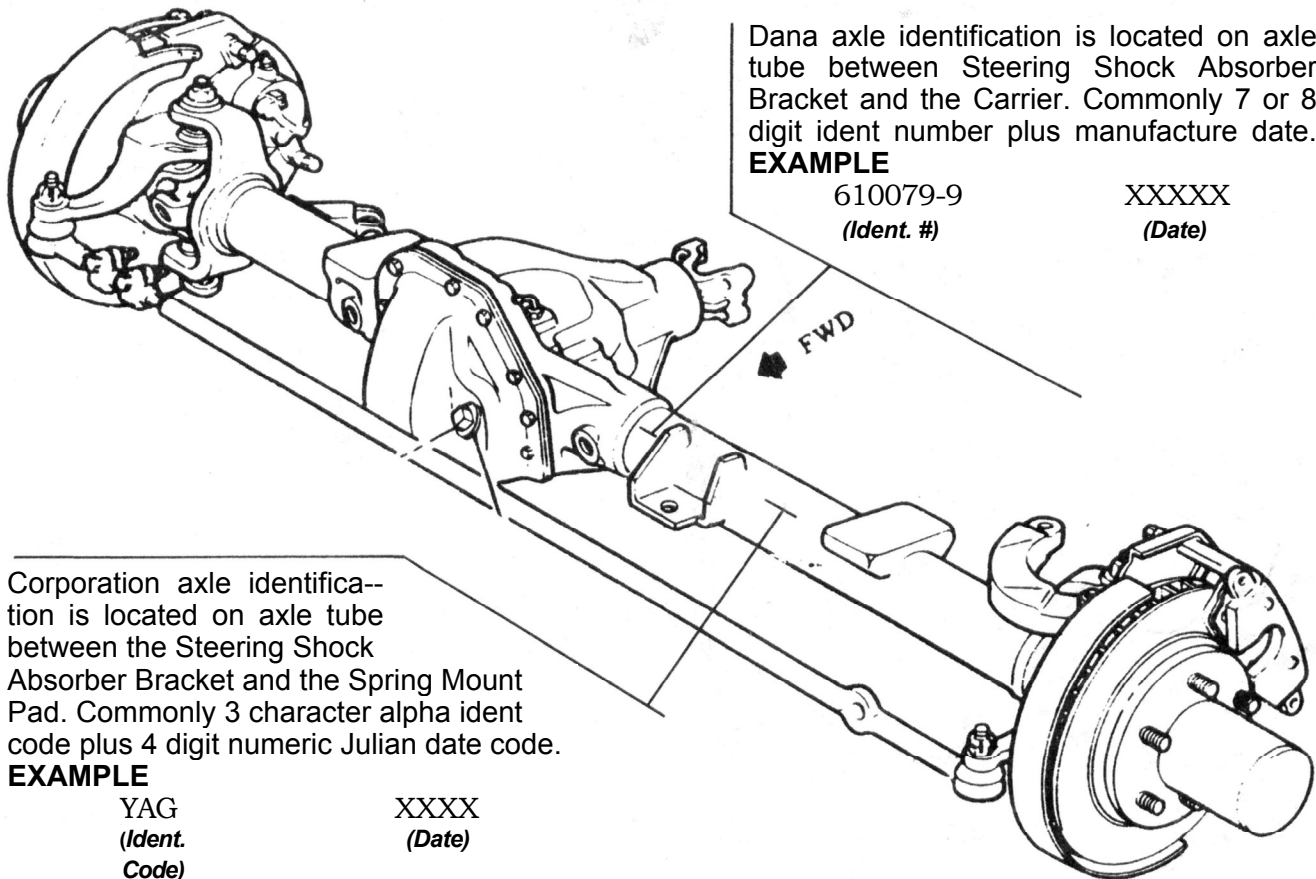
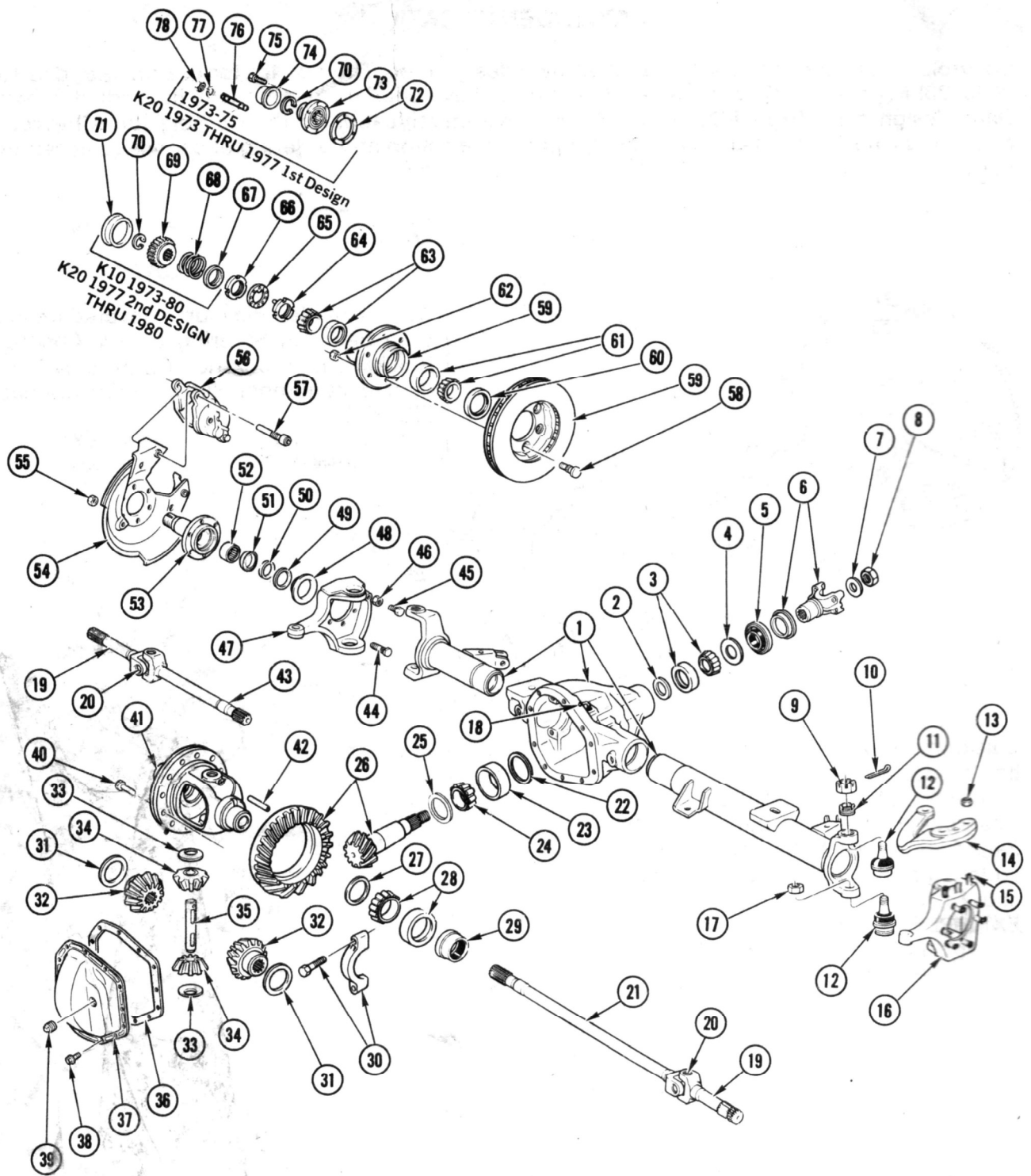


AXLE IDENTIFICATION

Chevrolet began the manufacture of their own design Front Drive Axles for use on $\frac{1}{2}$ and $\frac{3}{4}$ ton (K10 & K20) Four Wheel Drive vehicles. These axles have been used optionally in production with Dana design axles from 1977 thru 1980. Positive identification of the Corporation (Chevrolet) axle versus the Dana axle is necessary for proper selection and ordering of service replacement parts.





1973-80 K10, K20 FRONT AXLE (DANA DESIGN)

1973-80 K10, 20 FRONT AXLE (DANA DESIGN)

ILL. No.	Group No.		Per Car	Qty.	Description	Price Each	Price Ext.
1	6.008	376849	1		HOUSING ASM-1 973-76 1st Des. (Note 1)		
	6.008	458473	1		HOUSING ASM-1976 2nd Des -1978 (Note 1)		
	6.008	14008865	1		HOUSING ASM-1979-80		
2	5.460	2346830	AR		-SHIM, Pinion Brg. Adj. (.003)		
	5.460	2346831	AR		-SHIM, Pinion Brg. Adj. (.005)		
3	5.447	9412259	1		BEARING ASM, Pinion Frt.		
4	5.545	458478	1		SLINGER, Drive Pinion Oil		
5	5.469	3979616	1		SEAL ASM, Pinion Flange Oil		
6	5545	2403641	1		-FLANGE ASM, w/Deflector (w/Through holes for U-Bolt type U-joint attachment) 1973-77 1st Des		
	5.545	475438	1		-FLANGE ASM, w/Deflector (w/Threaded holes for Strap type U-joint attachment) 1977 2nd Des. -1980		
7	5.387	2423517			WASHER, Pinion Nut		
8	8.917		1		NUT, Hex Lk. Torq. Tens. (3/4" - 16)		
9	6.172	3967844	2		NUT.Strg. Knu. Upr. Ball Stud		
10	8.938		2		PIN, Cotter (1/8" x 1 1/2")		
11	6.022	3967845	2		RING, Socket Adj.		
12	6.203	463754	2		PIN KIT, Knu. Socket (Each kit contains 1-upper & 1-lower socket & item 9,10,11 &17)		
13	6.174	3965138	3		ADAPTER, Strg. Arm Stud		
14	6.103	3979552	1		ARM, Strg. - LH		
15	6.174	3965137	3		STUD, Strg. Arm		
16	6.020	360043	1		KNUCKLE ASM, Strg.- LH-1973-76 1st Des (Note 1) (Includes items 15 & 44)		
	6.020	14016437	1		KNUCKLE ASM, Strg.- LH-1976 2nd Des - 78 (Note 1) (Includes items 9,10,11,13,14,15,17 & 44)		
	6.020	14013071	1		KNUCKLE ASM, Strg.- LH-1979-80 (Includes items 9,10,11,13,14,15,17,44, 45 & 46)		
17	6.172	3979429	2		NUT, Lwr. Ball Stud-1973-76 1st Des (Note 1)		
	8.917	9422308	2		NUT, Hex Lk Torq Tens (3/4"-16)-1976 2nd Des - 80 (Note 1)		
18	6.008	360824	1		CONNECTOR, Axle Vent Hose		
19	6.055	458887	2		SHAFT, Axle Outer		
20	6.060	6273940	2		REPAIR KIT, Axle Shf. U-Jt.		
21	6.055	6273941	1		SHAFT, Axle Inner-LH		
22	5.460	2402522	AR		SHIM, Pinion Brg. Adj. (.003)		
	5.460	2402523	AR		SHIM, Pinion Brg. Adj. (.005)		
	5.460	2402524	AR		SHIM, Pinion Brg. Adj. (.010)		
23	5.484	187232	1		CUP, Drive Pinion Rr.		
24	5.484	9415227	1		CONE, Drive Pinion Rr.		
25	5.484	2403666	1		SLINGER, Rear Pinion Brg. Oil 1973 76 1st Des Only (Note 1) (Not Required For 2nd Design)		
26	5.529	2403655	1		GEAR KIT, Ring & Pinion (4.56)		
	5.529	2408337	1		GEAR KIT, Ring & Pinion (3.07)		
	5.529	2425400	1		GEAR KIT, Ring & Pinion (4.10-4.11)		
	5.529	3831912	1		GEAR KIT, Ring & Pinion (3.73)		
	5.529	471745	1		GEAR KIT, Ring& Pinion (2.76)		
	5.529	14002294	1		GEAR KIT, Ring & Pinion (3.40)		
	5.529	14024389	1		GEAR KIT, Ring & Pinion (3.21)		
5.529	14024390	1		GEAR KIT, Ring & Pinion (3.42)			
27	5.537	1784579	AR		SHIM, Diff. Brg. Adj. (.003)		
	5.537	1784580	AR		SHIM, Diff. Brg. Adj. (.005)		
	5.537	1784581	AR		SHIM, Diff. Brg. Adj. (.010)		
	5.537	1784582	AR		SHIM, Diff. Brg. Adj. (.030)		

1973-80 K10, 20 FRONT AXLE (DANA DESIGN)

ILL. No.	Group No.	Part No.	Per Car	Qty.	Description	Price Each	Price Ext.
28	5 536	9412265	2		BEARING ASM, Diff. Side		
29	6061	6273977	2		SEAL ASM, w/Guide Tube Oil 1973-78		
		14009603	2		SEAL ASM, w/Guide Tube Oil 1979-80		
30	N.S.				BEARING CAP & BOLT, Part of item #1		
31	5.543	2236254	2		WASHER, Diff. Side Gear Thrust		
32	5.528	3779581	2		GEAR, Diff. Side		
33	5 542	2346848	2		WASHER, Diff.		
34	5.526	2346845	2		GEAR, Diff. Pinion		
35	5.517	2346846	1		SHAFT, Diff. Pinion		
36	5.399	6273943	1		GASKET, Diff. Carr. Cvr.		
37	5.398	475591	1		COVER KIT, Diff. Carr. (Includes items 36 & 38)		
38	8.900		10		BOLT, Hex (5/16"-18 x5/8")		
39	8.971		1		PLUG, Diff. Carr Filler/Drain (3/4")		
40	5531	2402525	10		BOLT, Gear to Case (Also Part of Gear Kit 5.529)		
41	5.510	2457067	1		CASE, Diff. 4.10,4.11,4.56 Ratios (Less internal gears)		
	5.510	2457066	1		CASE, Diff. 2.76,3.07,3.21,3.40,3.42,3.73 Ratios (Less internal gears)		
42	5.518	2402527	1		PIN, Pinion Shf. Lk.		
43	6.055	6273942	1		SHAFT, Inner - RH		
44	5002	465057	12		BOLT, Fit Brk. Fig. Mtg. 1973-1978 1st Design (1V2" Long used without washer)		
	5.002	14008652	12		BOLT, Frt. Brk. Fig. Mtg. 1978 2nd Design, 1979-80 (1 ⁹ /16" Long used with washer for 1978 2nd Design only)		
	4665	14006500	12		WASHER, Frt. Brk. Fig. Mtg. (Used with 1978 2nd Design only)		
45	6.009	3711876	2		BOLT, Strg. Knu. Stop		
46	8.915		2		NUT, Hex Jam (3/8"-24)		
47	6020	360044	1		KNUCKLE ASM, Strg. - RH 1973-76 1st Des (Note 1) (Includes items 15&44)		
	6.020	14016438	1		KNUCKLE ASM, Strg. - RH 1976 2nd Des - 78 (Note 1) (Includes items 9,10,11,15,17 & 44)		
	6.020	14013072	1		KNUCKLE ASM, Strg. - RH 1979-80 (Includes items 9,10,11,15,17,44,45 & 46)		
48	6.056	6273934	2		DEFLECTOR, Otr. Shf. Oil		
49	6.061	376851	2		SEAL, Axle Outer		
50	6.056	376852	2		SPACER, Otr. Shf. Brg.		
51	6.061	376855	2		SEAL, Hub Spdl.Brg 1976-80		
52	6.056	3965121	2		BEARING, Otr. Shf.		
53	6.020	376853	2		SPINDLE KIT, Hub K10 1973-77 1st Des (Note 2) (Includes items 49 & 50)		
	6.020	376863	2		SPINDLE KIT, Hub K20 1973-77 1st Des (Note 3) (Includes items 49 & 50)		
	6.020	464039	2		SPINDLE KIT, Hub K10-20 1977 2nd Des. - 80 (Note 2,3) (includes items 49 & 50)		
54	4.665	14023429	1		PLATE ASM., Brk. Caliper Mts.-LH K10		
	4665	14023430	1		PLATE ASM., Brk. Caliper Mts.-RH K10		
	4.665	376864	2		PLATE ASM., Brk. Caliper Mts.-K20 1973-78		
	4.665	14001211	1		PLATE ASM., Brk. Caliper Mts.-LH K20 1979-80		
	4.665	14001212	1		PLATE ASM., Brk. Caliper Mts.-RH K20 1979-80		
55	8.917		12		NUT, Hex. Prev. Torq. (3/8"-24)		

1973-80 K10,20 FRONT AXLE (DANA DESIGN)

ILL. No.	Group No.	Part No.	Per Car	Description	Price Each	Price Ext.
56	4.665			CALIPER ASM, Brk	(See Catalog)	
57	4.665	5466938	4	BOLT, Brk. Clpr Mtg	1973	
	4.665	5468226	4	BOLT, Brk. Clpr. Mtg.	1974-80	
58	5.812	3995841	12	BOLT Whl.	K10	
	5.812	14005708	16	BOLT.Whl.	K20	
59	5.809	325068	2	HUB & DISC ASM,	K10 1973-77 1st Des (Note 2)	
	5.809	14026765	2	HUB & DISC ASM,	K10 1977 2nd Des-80 (Note 2)	
	5.809	3995722	2	HUB & DISC ASM,	K20 1973-77 1st Des (Note 3)	
	5.809	14026767	2	HUB & DISC ASM,	K20 1977 2nd Des-80 (Note 3)	
60	6.326	6273948	2	SEAL ASM, WW. Inner SEAL ASM, WW. Inner	K10 1973-80	
	6.326	6273949	2		K20 1977 2nd Des-80 (Note 3)	
					K20 1973-77 1st Des (Note 3)	
61	6.314	187617	2	CUP, WW. Inner Brg.	K20 1973-77 1st Des. (Note 3)	
	6.314	9412386	2	CONE, Whl. Inner Brg.	K20 1973-77 1st Des. (Note 3)	
	6.311	7451090	2	BEARING ASM, WW. Inner	K10 1973-77 1st Des. (Note 2)	
	6.311	7455617	2	BEARING ASM, WW. Inner	K10-20 1977 2nd Des.-80(Note2,3)	
62	5.813	358501	12	NUT, Whl. ($7/16$ "-20)	K10	
	5.813	3978901	16	NUT Whl. ($9/16$ "-18)	K20	
63	6.313	7451226	2	BEARING ASM, Whl. Otr.		
64	6.022	2403629	2	NUTASM,w/Pin. Whl. Brg.Adj.		
65	6.022	701765	2	RING, Whl. Brg. Adj.		
66	6.022	14034413	2	NUT, Whl. Brg. Adj. Lk.		
67	6.308	612082	2	PLATE, Hub Press Spr. Ret.		
68	6.308	660669	2	SPRING, Shf. Press		
69	6.063	2403684	2	GEAR, Hub Axle Shf.	1973-76 1st Des (Note 1)	
	6.063	472516	2	GEAR, Hub Axle Shf.	1976 2nd Des.-79 (Note 1)	
70	8.934	274932	2	RING, Otr. Axle Shf. Snap		
71	6.330	6259156	2	CAP, Hub Grease		
72	6.063	2403691	2	GASKET, Whl. Hub Fig.		
73	6.063	2403690	2	FLANGE, Whl. Hub		
74	6.330	3820832	2	RETAINER, Whl. Brg. Grease		
75	6.063	376866	12	BOLT, Hub Fig. Mtg.	(1976-77)	
76	5.812	2403692	12	STUD, Hub Fig. Mtg.	(1973-75)	
77	8.931		12	WASHER, Spr. Lk. ($3/8$ ")		
78	8.915		12	NUT, Hex Jam($3/8$ "-24)		

Note 1 : 1976 First Design Housing will have Steering Absorber Bracket welded approximately 4 inches from drivers side front Hub.
Second Design Housing will have Steering Absorber Bracket welded approximately 4 inches from Carrier

Note 2 : 1977 K10 First Design uses Inner Wheel Bearing 1 $25/32$ " ID & 3/16" OD. Second Design Inner Wheel Bearing is 2" ID & 3 $7/32$ " OD.

Note 3 : 1977 K20 First Design uses Inner Wheel Bearing 2" ID & 3 1/2" OD, also Outer Hub Gear is attached to Hub by 6 Bolts.
Second Design uses Inner Wheel Bearing 2" ID & 3 7/32" OD, also Outer Hub Gear is attached to Hub by Snap Ring.