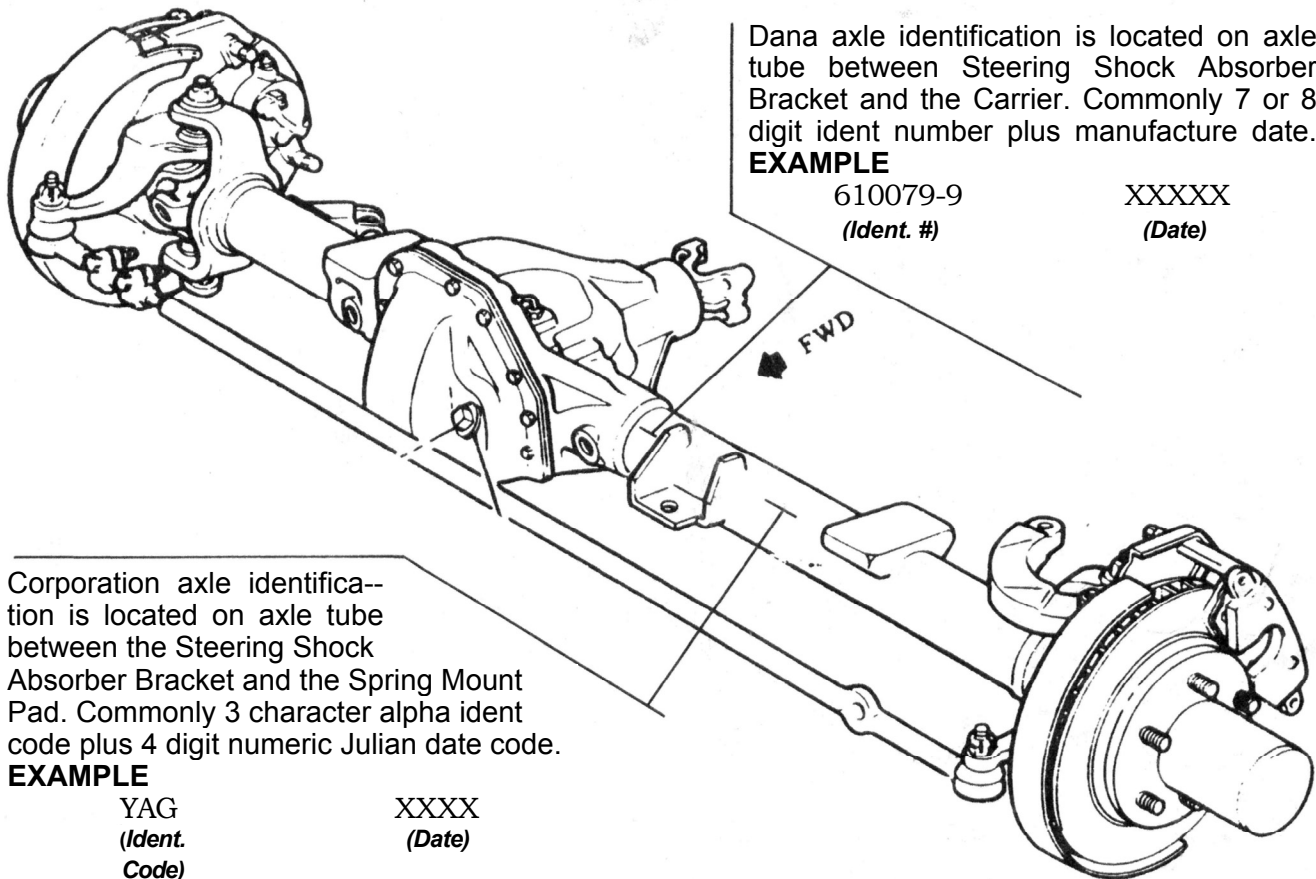
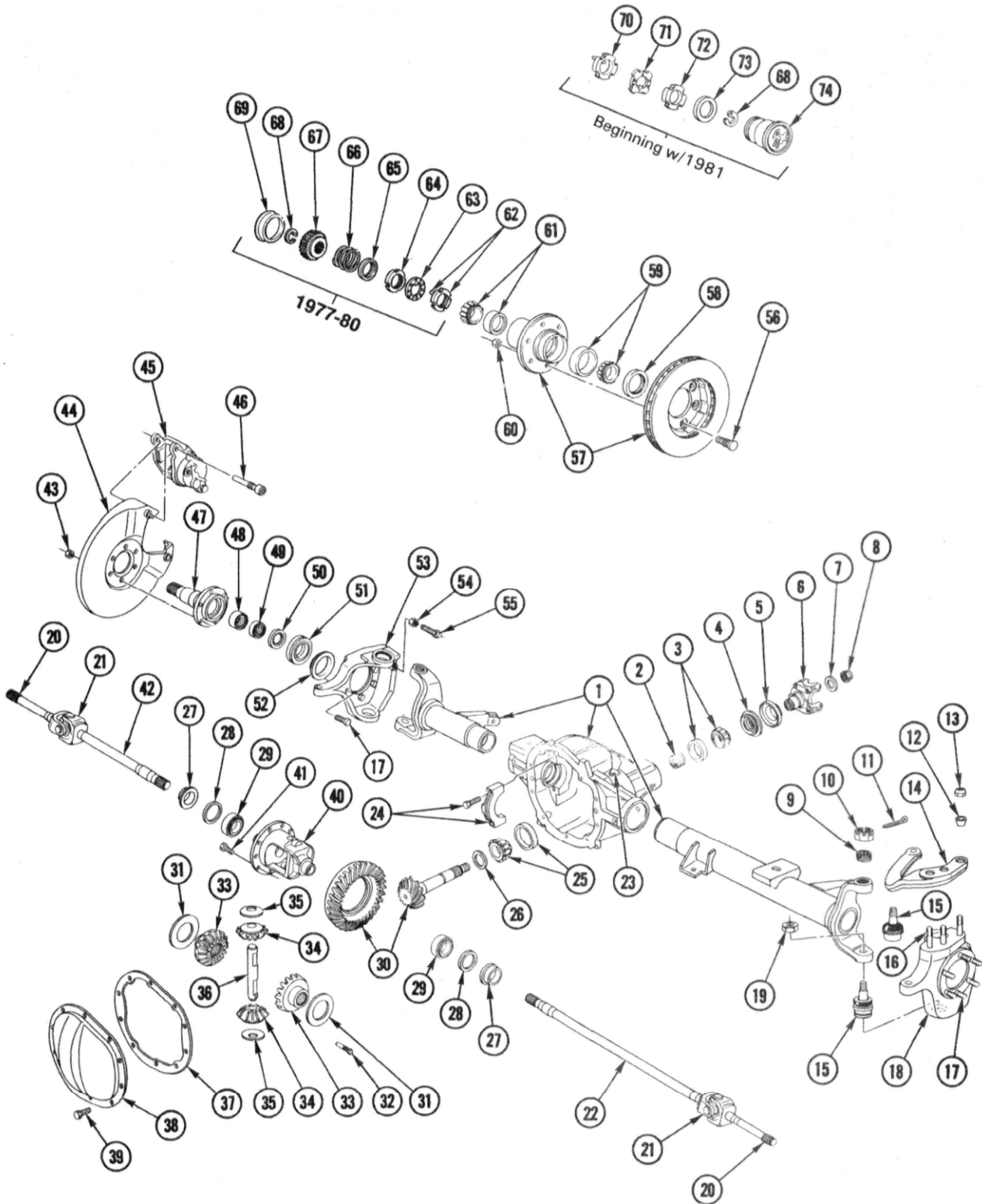


AXLE IDENTIFICATION

Chevrolet began the manufacture of their own design Front Drive Axles for use on $\frac{1}{2}$ and $\frac{3}{4}$ ton (K10 & K20) Four Wheel Drive vehicles. These axles have been used optionally in production with Dana design axles from 1977 thru 1980. Positive identification of the Corporation (Chevrolet) axle versus the Dana axle is necessary for proper selection and ordering of service replacement parts.





1977-83 K10, 20 FRONT AXLE (CORPORATION DESIGN)

1977-83 K10,K20 FRONT AXLE (CORPORATION DESIGN)

ILL No.	Group No.	Part No.	Per Car	Description	Price Each	Price Ext.
1	6.008 :	463747	1	I HOUSING ASM (1977-80)		
	6.008	14095588	1	HOUSING ASM. (1981-83)		
2	5.453	1234726	1	SPACER, Drive Png. Brg.		
3	5.447	7450984	1	BEARING ASM, Png. Frt.		
4	5.469	458859	1	SEAL ASM, Png. Fig. Oil		
5	5.545	543319	1	DEFLECTOR, Prop. Shf. Png. Fig.		
6	5.545	3988524	1	FLANGE ASM, Prop. Shf. Png. (Includes item 5)		
7	5.595	517900	1	WASHER, Prop. Shf. Png. Fig.		
8	5.595	1260823	1	NUT, Prop. Shf. Png. Fig.		
9	6.022	3967845	2	RING, Ball Stud Adj.		
10	6.172	3967844	2	NUT, Strg.Knu.Upr. Ball Stud		
11	8.938		1	PIN, Cotter(1/8" x 1 1/2 ")		
12	6.174	3965138	3	ADAPTER, Strg. Arm Stud		
13	8.917		3	NUT, HexPrev.Troq. (9/16"-18)		
14	6.103	3979552	1	ARM, Strg. Knu.		
15	6.203	463754	1	REPAIR KIT, Strg. Knu. Soc. Asm. Upr. & Lwr. (Kit contains both upper & lower sockets & items 9,10,11,12,13 & 19)		
16	6.174	3965137	3	STUD, Strg. Arm		
17	5.002	465057	12	BOLT, Frt. Brk. Fig. Mtg. 1977-1978 1st Design (11/2" long used without washer)		
	5.002	14008652	12	BOLT, Frt. Brk. Fig. Mtg. 1978 2nd Design 1979-83(19/16" long used with washer for 1978 2nd Design only)		
	4.665	14006500	12	WASHER, Frt. Brk. Fig. Mtg (Use with 1978 2nd Design only)		
18	6.020	14016437	1	KNUCKLE ASM, LH 1977-78 (Contains items 9 thru 17 & 19)		
	6.020	14013071	1	KNUCKLE ASM, LH 1 979-83 (Contains items 9 thru 17,19, 54 & 55)		
19	8.917	9422308	2	NUT, Hex Lk Torq Tens (3/4"-16)		
20	6.055	458887	2	SHAFT, Axle Outer (1977-80)		
	6.055	14026763	2	SHAFT, Axle Outer (1 981 -83)		
21	6.060	6273940	2	REPAIR KIT, Axle Ujt.		
22	6.055	458877	1	SHAFT, Axle Inner-LH		
23	6.008	14056299	1	VENTILATOR, Diff. Carr.		
24	N.S.			BOLT & BEARING CAP, Part of item # 1		
25	5.484	7451155	1	BEARING ASM, Png. Rr.		
26	5.460	1394892	AR	SHIMKIT, Dr. Png. Brg. (.020-.024)		
	5.460	1394893	AR	SHIMKIT, Dr. Png. Brg. (.025-.029)		
	5.460	1394894	AR	SHIMKIT, Dr. Png. Brg. (.030-.034)		
	5.460	1394895	AR	SHIMKIT, Dr. Png. Brg. (.035-.039)		
27	6.061	6273977	2	SEAL ASM, w / Guide Tube Oil		
28	5.537	9775809	2	SPACER, Diff. Brg. Adj.(.170) <i>(Used Selectively with Following Shim kits)</i>		
	5.537	3995791	AR	SHIMKIT, Diff. Brg Adj. (.040-.044)		
	5.537	3995792	AR	SHIM KIT, Diff. Brg Adj. (.046-.050)		
	5.537	3907088	AR	SHIMKIT, Diff. Brg Adj. (.052-.056)		
	5.537	3907089	AR	SHIMKIT, Diff. Brg Adj. (.058-.062)		
	5.537	3853759	AR	SHIMKIT, Diff. Brg Adj. (.064-.070)		
	5.537	3853760	AR	SHIMKIT, Diff. Brg Adj. (.072-.078)		
	5.537	3853761	AR	SHIMKIT, Diff. Brg Adj. (.080-.086)		
	5.537	3853762	AR	SHIMKIT, Diff. Brg Adj. (.088-.094)		
5.537	3853912	AR	SHIMKIT, Diff. Brg Adj. (.096-.100)			
29	5.536	7451281	2	BEARING ASM, Diff. Si		
30	5.529	1258708	1	GEAR KIT, Rg. & Png. (2.76/2.73)		
	5.529	1258709	1	GEAR KIT, Rg. & Png. (3.07/3.08)		
	5.529	1258710	1	GEAR KIT, Rg. & Png. (3.40/3.42)		
	5.529	1259441	1	GEAR KIT, Rg.& Png. (3.73)		
	5.529	3988515	1	GEAR KIT, Rg.& Png. (4.10/4.11)		
	5.529	1258707	1	GEAR KIT, Rg. & Png. (2.56)		
5.529	1258713	1	GEAR KIT, Rg. & Png. (3.21/3.23)			
31	5.543	393578	1	WASHER, Diff. Si Gear Thrust		
32	5.518	393132	1	SCREW, Diff. Png. Shf. Lk.		
33	5.527	1397647	1	GEAR KIT, Diff. Si (Kit includes 2- Si Gears, 2-Pinion Gears, Thrust Washers, Pinion Shaft & Lock Screw)		
34	5.526	6270977	2	GEAR, Diff. Png.		
35	5.542	3984818	2	WASHER, Diff. Png. Thrust		
36	5.517	14006401	1	SHAFT, Diff. Png.		
37	5.399	458860	1	GASKET, Hsg. Cvr.		
38	5.398	471142	1	COVER, Diff. Carr.		
39	5.398	384951	10	BOLT, Carr. Cvr.		

1977 83 K10,K20 FRONT AXLE (CORPORATION DESIGN)

ILL. NO	Group No.	Part No.	Per Car	Description	Price Each	Price Ext.
40	5.510	1252981	1	CASE, Diff. (Exc. 2.56 Ratio) (Less internal gears)		
	5.510	1252980	1	CASE, Diff. (w/2.56 Ratio) (Less internal gears)		
41	5.531	1241564	10	BOLT, Dr. Gear to Case		
42	6.055	458878	1	SHAFT, Axle Inner - RH		
43	8.917	9422298	12	NUT, Prevailing Torque (3/8 - .24) (1977-79)		
	5.002	14056133	12	NUT, Frt. Brk. Fig. Mtg. Bolt (1980-83)		
44	4.665	14023429	1	PLATE ASM, Brk. Clpr. Mt-LH-K10		
	4.665	14023430	1	PLATE ASM, Brk. Clpr. Mt.-RH-K10		
	4.665	376864	2	PLATE ASM, Brk. Clpr. Mt.-K20 (1977-78)		
	4.665	14001211	1	PLATE ASM, Brk. Clpr. Mt-LH-K20 (1979-80)		
	4.665	14001212	1	PLATE ASM, Brk. Clpr. Mt-RH-K20 (1979-80)		
	4.665	14023421	1	PLATE ASM, Brk. Clpr. Mt-LH-K20 (1981-83)		
45	4.665	14023422	1	PLATE ASM, Brk. Clpr. Mt.-RH-K20 (1981-83)		
45	4.665			CALIPER ASM., (See Catalog)		
46	4.665	5468226	4	BOLT, Brk. Caliper		
47	6.020	464039	2	SPINDLE KIT, Whl. Hub (Contains items 48, 49 & 50)		
48	6.056	3965121	2	BEARING ASM, Otr. Shf.		
49	6.061	376855	2	SEAL, Hub Spdl.Brg.		
50	6.056	376852	2	SPACER, Otr. Shf. Brg.		
51	6.061	376851	2	SEAL, Spdl.		
52	6.056	6273934	2	DEFLECTOR, Otr. Shf. Oil		
53	6.020	14016438	1	KNUCKLE ASM, RH 1977-78 (Contains items 9 thru 17 & 19)		
	6.020	14013072	1	KNUCKLE ASM, RH 1 979-83 (Contains items 9 thru 1 7, 1 9, 54 & 55)		
54	8.915		2	NUT, HexJam (3/8"-24)		
55	6.009	3711876	2	BOLT, Strg. Knu. Stop		
56	5.812	3995841	12	BOLT, Whl.-K10 □ BOLT, Whl. - K20		
	5.812	14005708	16			
57	5.809	14026765	2	HUB & DISC ASM, Frt. Whl -K10		
	5.809	14026767	2	HUB & DISC ASM, Frt. Whl.-K20		
58	6.326	6273948	2	SEAL, Frt. Whl. Inner Brg.		
59	6.311	7455617	2	BEARING ASM, Frt. Whl. Inner		
60	5.813	358501	12	NUT, (7/16"-20)-K10		
	5.813	3978901	16	NUT, (9/16"-18)-K20		
61	6.313	7451226	2	BEARING ASM, Frt.Whl.Otr.		
62	6.022	2403629	2	NUT ASM, w/Pin Frt. Whl. Brg. Adj.		
63	6.022	701765	2	RING, Frt.Whl.Brg. Adj.		
64	6.022	14034413	2	NUT, Frt. Whl. Brg. Adj.		
65	6.308	612082	2	PLATE, Hub Press Spr. Ret.		
66	6.308	660669	2	SPRING, Hub Press		
67	6.063	472516	2	GEAR, Hub Axle Shf.		
68	8.934	274932	2	RING, Ext. Reg. (1 1/4" Dia. Shf.)		
69	6.330	6259156	2	CAP, Hub Grease		
70	6.022	14034410	2	NUT, w/Pin, Frt. Whl. Brg. Adj.		
71	6.022	14026772	2	LOCK, Whl. Brg. Adj. Nut		
72	6.022	14034413	2	NUT, Frt. Whl. Brg. Adj. Lk.		
73	6.022	14026798	2	WASHER, Frt. Axle Otr. Shf. Thrust		
74	6.310	14056192	2	LOCK ASM, Auto Frt. Axle (Note 1)		

Note 1: See exploded Lock Asm illustration for detail parts.